



# RFID READER

ONE STOP SERVICE FOR **RFID SOLUTION**



## CONTACT US

+66(0)2-136-9171-4

@Smartidentify

info@smartiden.com

www.smartiden.com



WEBSITE

# ABOUT US

## SMART IDENTIFY LTD.,

is established in 2009, there are 2 business parts in our company to full fill customer requirement. One is RFID Solution team (Hardware & software) and another is Machinery & Automatic System Solution team which both of teams have engineers and technicians who are working experience in field business more than 20 years.



We support both of RFID hardware and software including other accessories & other service which involve with RFID project solution as follow these

- RFID Tag
- RFID Reader & Accessories
- RFID Proof of Concept (POC)
- RFID installation & network infrastructure
- RFID & Electrical & Lan installation
- RFID Service Process for NBTC
- Software Integrates & Customize Total Solution

Smart Identify Ltd., Hope that we can be your smart choice when you think of RFID in nearly future.

## RFID MISSION

Our RFID products is fast growing provider with year of experience in providing RFID Solution. we would like to be One Stop Service Point for RFID solution.

Our team have more RFID experience to apply RFID in production line or traceability system such as logistic, access management, food and animal traceability, warehouse management, asset management, personal identification, RFID & PLC control etc.,

Customers will get completely with RFID requirements such as product information, price, design, customize reader, installation, suggestion, consultant, POC, ROI for starting RFID project.





# CONTENTS

## ABOUT US

## OUR PRODUCTS

|                                      |    |
|--------------------------------------|----|
| Smart Card & Wristband .....         | 2  |
| RFID Tag                             |    |
| RFID Label Tag and Inlay .....       | 4  |
| RFID Windshield Tag .....            | 5  |
| RFID Jewelry Tag .....               | 5  |
| RFID Laundry Tag .....               | 5  |
| RFID Metal Tag .....                 | 6  |
| RFID Tool Tag .....                  | 7  |
| Other RFID Tag .....                 | 8  |
| RFID Reader                          |    |
| RFID Desktop Reader .....            | 10 |
| RFID Integrate Reader .....          | 11 |
| RFID Fixed Rader (Controller) .....  | 12 |
| RFID Antenna .....                   | 13 |
| RFID Handheld Reader .....           | 14 |
| RFID Barcode Printer .....           | 16 |
| Customized RFID Station .....        | 18 |
| POC SERVICE (PROOF OF CONCEPT) ..... | 20 |
| RFID INSTALLATION TEAM .....         | 21 |

## RFID SMART CARD

Our Smart card team will provide you all type of RFID smart card and all frequency such as LF, HF, UHF and Dual or Hybrid card. Besides that, we will help & support you for designing or printing service both smart card & non smart card (no chip card) with Hight quality.



### WHITE CARD

with quality flat surface. The white card can be processed in common card printer to bring out elegant printing result.

- LF 125 Khz. : low frequency card (most of them are read only cards)
- HF 13.56 Mhz. : High frequency card (read & write)
- UHF 920~925 Mhz : High frequency card reads far (read & write)
- Dual : Two frequency cards in one card

### PRINTING RFID SMART CARD

We offer you the perfect RFID printing card to express your brand identify and creativity through a range of outstanding RFID card such as membership, employee card, hotel card, coupon card, student card, parking card and etc. Besides that we also have many function for printing to serve your expore idea for create your perfect card.



### SERVICE LANYARD PRINTING

All of lanyard can be customized just tell us your ideas you will get perfect artwork. We offer a range of print methods to accommodate custom lanyards with logos. Custom lanyards with text or intricate designs is no problem. Accessories are eco-friendly and free choose.







## RFID WRISTBAND

RFID Wristband we provide several styles and luxurious materials for you choose to be applied in many applications customer can order the logo printed on the product at competitive rates. LF, HF and UHF is available for wristband



### WRISTBAND POLYESTER

Material : Polyester & Nylon  
Chip : LF, HF, UHF Available  
Color dye-sublimation printing in-outside



### WRISTBAND OVAL HEAD

Material : Silicone  
Chip : LF, HF, UHF Available  
Working Tempe -30°C~220°C



### WRISTBAND NYLON

Material : Nylon Strap + ABS Dial  
Chip : LF, HF, UHF Available  
Working Tempe -30°C~75°C



### WRISTBAND NYLON

Material : Nylon Strap + PVC  
Chip : LF, HF, UHF Available  
Working Tempe -30°C~75°C



### WRISTBAND ROUND HEAD

Material : Silicone  
Chip : LF, HF, UHF Available  
Working Tempe -30°C~220°C



### WRISTBAND SLAP BRACELET

Material : Silicone  
Chip : LF, HF, UHF Available  
Working Tempe -30°C~220°C



### DISPOSABLE PAPER

Material : Paper  
Chip : LF, HF, UHF Available  
Working Tempe -30°C~220°C



### DISPOSABLE PVC

Material : PVC  
Chip : LF, HF, UHF Available  
Working Tempe -30°C~220°C

## RFID LABEL &amp; INLAY TAG

Smart Identify Ltd., We are provide a wide range of HF, NFC and UHF Label and inlay designs target at different application areas. We offer optimized RFID label and inlay for item-level tagging application in the apparel, logistics, pharmaceutical, manufacturing, library, document, asset, NFC and other market.

## UHF LABEL



| MODEL                    | SIZE      | MATERIAL             | OPERATING TEMP |
|--------------------------|-----------|----------------------|----------------|
| UHF Label UF050          | 52x33 mm. | PET                  | -20°C~80°C     |
| UHF Label UF070          | 73x17 mm. | PET                  | -40°C~85°C     |
| UHF Label Flagtag        | 60x21 mm. | PET                  | -40°C~85°C     |
| UHF Label Dogbone        | 97x27 mm. | Matt Paper           | -40°C~85°C     |
| UHF Wet Inlay Bling      | 25x15 mm. | Clear PET            | -40°C~85°C     |
| UHF Inlay H47            | 44x44 mm. | Coated Paper/<br>PET | -20°C~75°C     |
| UHF Wet Inlay Alien 9640 | 98x12 mm. | Paper                | -40°C~70°C     |

## HF &amp; NFC LABEL



| MODEL                | SIZE       | MATERIAL | OPERATING TEMP |
|----------------------|------------|----------|----------------|
| HF Label 4025        | 40x25 mm.  | PET      | -20°C~85°C     |
| HF Label I-Code      | 50x50 mm.  | Paper    | -20°C~65°C     |
| NFC Ntag 213 Sticker | Dia 25 mm. | PET      | -20°C~85°C     |



## RFID WINDSHIELD TAG

The passive UHF RFID Label is optimized to work on car windshield glass and suitable for a wide selection of automatic vehicle identification. It's a safe non-toxic and durable tag that was specially developed on transportation field. The product is non-transferable and cannot be removed without being destroyed.



| MODEL                | SIZE       | MATERIAL  | OPERATING TEMP |
|----------------------|------------|-----------|----------------|
| UHF Windshield 8030  | 80x13 mm.  | PP or PET | -50°C~85°C     |
| UHF Windshield 10040 | 100x40 mm. | PET       | -25°C~65°C     |

## RFID JEWELRY TAG

As the rising trend of adopting RFID jewelry tags in jewelry inventory, Smart Identify has recommended the smallest RFID jewelry tags for jewelry inventory management applications, such as in retail, jewelry shop, warehouse and secured storage applications.



| MODEL         | SIZE      | MATERIAL  | OPERATING TEMP |
|---------------|-----------|-----------|----------------|
| UHF Label J62 | 93x14 mm. | PET       | -20°C~80°C     |
| UHF PVC White | 30x15 mm. | White PVC | -25°C~55°C     |

## RFID LAUNDRY TAG

RFID laundry tag is special tag design for the laundry or garment management. The Nylon material or Silicon material is resistance for heat, pressure and chemical substance to encounter during the process



| MODEL               | SIZE       | MATERIAL      | OPERATING TEMP               |
|---------------------|------------|---------------|------------------------------|
| UHF Laundry S7015   | 70x15 mm.  | Nylon         | Washing 90°C<br>Ironer 180°C |
| UHF Laundry Silicon | 100x15 mm. | Silicone      | -40°C~120°C                  |
| UHF Laundry P4024   | 40x24 mm.  | Plasitc (PPS) | -20°C~150°C                  |



## RFID METAL TAG

RFID Metal Tag or RFID Anti Metal Tag is a UHF Tag with a special feature that can be attached to metal materials without signal interference. Makes it possible to read the tag's data value. suitable for applications logistics and warehouse management, IT asset control, automotive part tracking inventory management, other metal carrier applications and etc.



### UHF TAG P13522

Material : ABS

Size : 135x22x12 mm.

Operating Temp -5°C~75°C



### UHF TAG MT-P9011

Material : Covered PCB

Size : 90x11x3.4 mm.

Operating Temp -25°C~55°C



### UHF TAG P9525

Material : Covered PCB

Size : 95x25x3.4 mm.

Operating Temp -25°C~55°C



### UHF TAG P7325

Material : Covered PCB

Size : 73x25x1.8 mm.

Operating Temp -25°C~68°C



### UHF TAG ABS7025

Material : High Polymer

Size : 70x25x5 mm.

Operating Temp -25°C~70°C



### UHF TAG F8020

Material : PET

Size : 80x20x1.3 mm.

Operating Temp -20°C~50°C



### UHF TAG P8020

Material : Covered PCB

Size : 80x20x3.4 mm.

Operating Temp -25°C~55°C



### UHF TAG P5213

Material : Covered PCB

Size : 52x13x3.5 mm.

Operating Temp -40°C~100°C



### UHF TAG P852011

Material : ABS

Size : 85x20x11 mm.

Operating Temp -25°C~55°C



### UHF TAG PD16

Material : Covered PCB

Size : 16x3.0 mm.

Operating Temp -40°C~100°C



### UHF TAG FLEX7030

Material : Special Electronic

Size : 70X30x1.25 mm.

Operating Temp -40°C~80°C



### UHF TAG FLEX6025

Material : Special Electronic

Size : 60x25x1.0 mm.

Operating Temp -40°C~85°C



## RFID TOOL TAG

RFID Tool Tag is a small size UHF Metal Tag for attached to various types of tools, either medical equipment or maintenance technician's tools. To use to check these devices that are still complete or not. or for verification after use this ensures that no equipment will be dropped in the area.



**UHF TAG P2208**

Material : FR4 Bared circuit

Size : 22x8x3 mm.

Operating Temp -25°C~55°C



**UHF TAG US001**

Material : Ceramic

Size : 12.7x7.1x3 mm.

Operating Temp -30°C~85°C

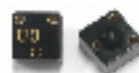


**UHF TAG P1005**

Material : FR4

Size : 10x5x3 mm.

Operating Temp -25°C~85°C



**UHF TAG 0606**

Material : PCB

Size : 6x6x4 mm.

Weight : 0.5 g



**UHF TAG P1307**

Material : PCB

Size : 13x7x3 mm.

Weight : 0.5 g



**UHF TAG P060302**

Material : PCB

Size : 6x3x3.0 mm.

Weight : 0.5 g



**UHF TAG PD5**

Material : PCB

Size : 5x4.0 mm.

Weight : 0.5 g



**UHF TAG P0904**

Material : FR4

Size : 9.4x4.3x1.6 mm.

Weight : 1 g

## RFID TEMPERATURE TAG

High Temperature Tag is suitable for use in extreme heat conditions or the job that requires an RFID Tag that can withstand heat over 100 degrees. The High Temperature Tag is quite expensive. If you want the RFID Tag to be used in a temperature not exceeding 130 degrees, it is recommended to use a replacement RFID Metal Tag.



**UHF TAG HT3146**

Material : Plastics

Size : 46x31x7.5 mm.

Operating Temp -25°C~95°C

\*Peak value 230°C 1 hour



**UHF TAG HT4215**

Material : HighTemperature

Size : 46x31x7.5 mm.

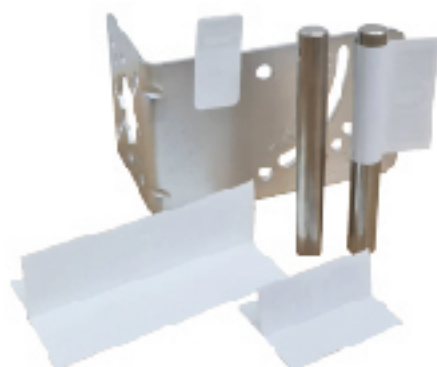
Operating Temp -40°C~150°C

\*Peak value 180°C 10 hour



## OTHER RFID TAG

In addition, at Smart Identify, we also have a variety of RFID tags to choose from to suit your use.



## RFID Flag Tag

RFID Tag for attaching to steel helps save costs. Flag Tag is another option for installing RFID Tags on steel.

| MODEL    | SIZE        | FREQUENCY    |
|----------|-------------|--------------|
| FT6021   | 6x2 cm.     | 902~928 MHz. |
| FT-8050  | 8x5 cm.     | 902~928 MHz. |
| FT120100 | 120x100 cm. | 902~928 MHz. |

## RFID Cable Tie Tag

RFID tags are disposable, easy to install, can be applied to attach tags to equipment well or can be used to prevent corruption and facilitate faster counting. The company has many types of Cable Tie Tags.

| MODEL                     | SIZE                                | FREQUENCY    |
|---------------------------|-------------------------------------|--------------|
| CT-P5227<br>(Small green) | 52(L) x 27(W) mm.<br>Leange 325 mm. | 902~928 MHz. |
| CT-P9028<br>(Big Green)   | 90(L) x 28(W) mm.<br>Leange 445 mm. | 902~928 MHz. |
| CT-P7928<br>(Black)       | 79(L) x 28(W) mm.<br>Leange 328 mm. | 902~928 MHz. |
| CT-C3623<br>(Red)         | 36(L) x 23(W) mm.<br>Leange 280 mm. | 902~928 MHz. |

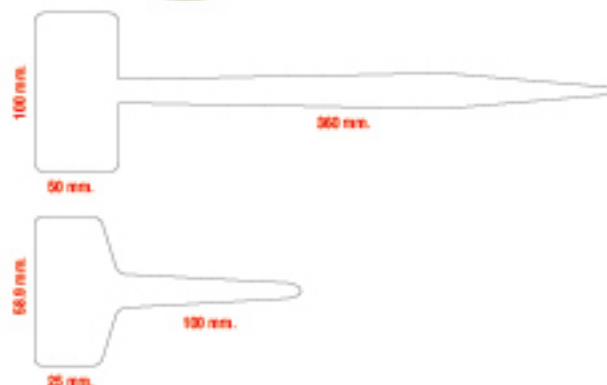






### RFID Plant Tag

PP plant tag is an RFID tag that is suitable for installation to record and measure the growth of plants. It is an RFID Tag that can withstand sunlight and rain and is convenient to use. Both because it can be planted in a plant pot immediately



| MODEL              | SIZE                                  | FREQUENCY    |
|--------------------|---------------------------------------|--------------|
| RFID-PLT-UHF-50100 | 50(L) x 100(W) mm.<br>Leange 360 mm.  | 902~928 MHz. |
| RFID-PLT-UHF-5825  | 58.9(L) x 25(W) mm.<br>Leange 100 mm. | 902~928 MHz. |

### RFID Asset Tag

RFID has been applied to many Asset Management applications, so Smart Identify, we have RFID Asset tags that are suitable for attaching assets of all types, all sizes, and are suitable for assets which be located in both the in door and out door sections.



### RFID Tag for Marathon

Running is one of the most popular sports. The use of RFID Tags attached to Bitmaps is becoming more widely popular. Therefore, if you are looking for RFID Tags and related RFID readers to use in sports activities. Marathon We are ready for you to finish in one place.



## SID BRAND

SID is legally registered under the trademark of Smart Identity Co., Ltd. and registers with The National Broadcasting and Telecommunication Commission (NBTC) so SID reader can be widely applied in many RFID application systems by legally. The Reader are design upon fully self-intellectual property and based on proprietary efficient digital signal processing algorithm.

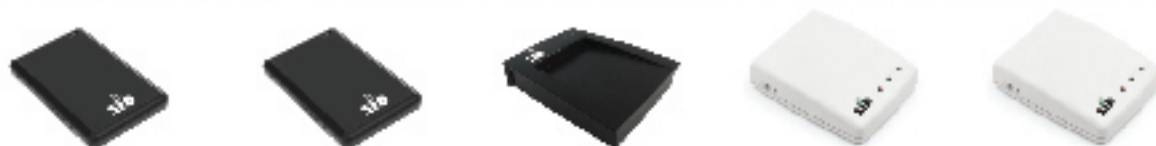
## RFID DESKTOP READER

**LF DESKTOP READER (125 KHZ.)** Proximity Card Reader for 125 Khz. This reader customer can choice the model for interface your computer using.



| Model     | L122-RS                                | L122-USB |
|-----------|--|----------|
| Dimension | 104x68x10 mm.                          |          |
| Interface | RS232                                  | USB      |
| Work Mode | Read Only (Output format 10 digit Dec) |          |
| Support   | EM4200 / TK4100                        |          |

**HF DESKTOP READER (13.56 MHZ.)** There are 3 main model for 13.56 Mhz. reader which we divide the funtion as follow this



| Model     | H136/H736/H937 USB-L   | H136/H736/H937 UKBL | H136/H736/H937 USB | H136/H736/H937 SR | H136/H736/H937 SRIP |
|-----------|--|---------------------|--------------------|-------------------|---------------------|
| Dimension | 105x70x11 mm.  |                     | 115x82x25 mm.      | 123x94x29 mm.     |                     |
| Weight    | 80 g.  |                     | 88 g.              | 144 g.            |                     |
| Interface | USB-L  |                     | USB                | RS232             | RS232+TCP/IP        |
| Work Mode | Read & Write   | Read Only           | Read & Write       | Read & Write      | Read & Write        |
| Support   | Model H136 Read & Write Card & Tag ISO1443A&B<br>Model H736 Read & Write Card & Tag ISO1443A&B, ISO15693   Model H937 Read & Write Card & Tag ISO15693 |                     |                    |                   |                     |

**UHF DESKTOP READER (920~925 MHZ.)** UHF Desktop reader can read and write UHF tag the read distance is 3-10 cm. (depend on tag)



| Model     | U809 USB-L                          | U809 UKBL | U816 SRIP              | U6210         | U816-3          |
|-----------|-------------------------------------|-----------|------------------------|---------------|-----------------|
| Dimension | 105x70x11 mm.                       |           | 123x94x29 mm.          | 142x85x20 mm. | 122.4x84x20 mm. |
| Weight    | 80 g.                               |           | 144 g.                 | 200 g.        | 104 g.          |
| Interface | USB-L                               |           | RS232+TCP/IP           | USB           | RS232+USB       |
| Work Mode | Read & Write                        | Read Only | Read & Write           | Read & Write  | Read & Write    |
| Support   | ISO18000-6B, ISO18000-6C (EPC C1G2) |           | ISO18000-6C (EPC C1G2) |               |                 |



## RFID INTEGRATED READER

Integrated Reader is the reader that have controller and antenna inside together then it's easy for installation and save cost. However the purpose of integrate won't suitable for reading wide space area so we often see using integrate with entrance parking lot read tag in the small gate etc.



| Model     | Dimension      | Weight | Interface       | Support                | Distance   |
|-----------|----------------|--------|-----------------|------------------------|------------|
| U881-4dbi | 165x165x57 mm. | 760 g. | RS232 & Wiegand | ISO18000-6C (EPC C1G2) | 0.5 - 5 m. |



| Model     | Dimension      | Weight  | Interface               | Support                | Distance |
|-----------|----------------|---------|-------------------------|------------------------|----------|
| U881-8dbi | 255x255x50 mm. | 1000 g. | RS232 & Wiegand         | ISO18000-6C (EPC C1G2) | 3 - 8 m. |
| U881-8IP  |                |         | RS232, TCP/IP & Wiegand |                        |          |



| Model      | Dimension       | Weight  | Interface                      | Support                               | Distance  |
|------------|-----------------|---------|--------------------------------|---------------------------------------|---|
| U6881-9dbi | 298x298x105 mm. | 2800 g. | RS232, RS485, TCP/IP & Wiegand | ISO18000-6B<br>ISO18000-6C (EPC C1G2) | Built-in high performance 8 dbi circular antenna with effect distance up to 9 m |



| Model     | Dimension      | Weight  | Interface               | Support                | Distance  |
|-----------|----------------|---------|-------------------------|------------------------|-----------|
| U861L12IP | 455x455x55 mm. | 2600 g. | RS232, TCP/IP & Wiegand | ISO18000-6C (EPC C1G2) | 5 - 10 m. |



| Model | Dimension      | Weight  | Interface               | Support                               | Distance |
|-------|----------------|---------|-------------------------|---------------------------------------|----------|
| U2881 | 120x300x28 mm. | 2900 g. | RS232, RS485, & Wiegand | ISO18000-6B<br>ISO18000-6C (EPC C1G2) | 3.5 m.   |

\*Effective reading distance depends on protocol, antenna, tag and working environment

## RFID FIXED READER (CONTROLLER)

RFID Fixed Reader also know as RFID Controller is responsible for reading values from the RFID tag. This type of reader does not have the antenna inside the device. The customer must to buy the antenna for installation together. The advantage point is customers can choose the suitable type of antenna for their system to reading RFID tag



### UHF Fixed Reader Model UF2861

- Size 230x170x40 mm.
- Based on Impinj R2000 Design
- Support ISO18000-6C(EPC C1G2), ISO18000-6B protocol tag
- 4 TNC antenna port with antenna auto-tuning and failure detection

- Frequency 920~925 MHz.
- RF output power up to 30 dbm (adjustable)
- Low power dissipation with single +9 DC power supply
- Support RS232, RS485, RJ45 (TCP/IP) with other interface POE optional



### UHF Fixed Reader Model UF2881A12

- Size 227x170x40 mm.
- Based on Impinj R2000 Design
- Support ISO18000-6C(EPC C1G2), ISO18000-6B protocol tag
- 12 SMA antenna port with antenna auto-tuning and failure detection

- Frequency 920~925 MHz.
- RF output power up to 30 dbm (adjustable)
- Low power dissipation with single +9 DC power supply
- Support RS232, RS485, RJ45 (TCP/IP) with other interface POE optional



### UHF Fixed Reader Model UF2889L

- Size 268x181x28 mm.
- Based on Impinj R2000 Design
- Support ISO18000-6C(EPC C1G2), ISO18000-6B protocol tag
- 8 TNC antenna port with antenna auto-tuning and failure detection

- Frequency 920~925 MHz.
- RF output power up to 33 dbm (adjustable)
- Low power dissipation with single +9 DC power supply
- Support RS232, USB(Slave), RJ45 (TCP/IP) interface



## RFID ANTENNA

Antenna is used with the fixed reader (controller) to send signal from reader to RFID tag and receive value from RFID tag to fixed reader. We provide many types of antenna design to use and choose for suitable with your system



| Model          | SID-ANT-U4CP-1616  | SID-ANT-U8CP-1616  | SID-ANT-U9CP-2626  | SID-ANT-U10CP-3030      | SID-ANT-U8CP-4516  | SID-ANT-U10LP-6210  | SID-ANT-U4CP-1616  | SID-ANT-U12CP-1201 |
|----------------|--------------------|--------------------|--------------------|-------------------------|--------------------|---------------------|--------------------|--------------------|
| Gain           | 4 dbi              | 8 dbi              | 9 dbi              | 10 dbi                  | 8 dbi              | 10 dbi              | 10 dbi             | 12 dbi             |
| Polarization   | Circular           | Circular           | Circular           | Circular                | Circular           | Polarization        | Polarization       | Circular           |
| Connector      | N-Female           | N-Female           | N-Female           | SMA-Female              | SMA-Female         | SMA-Female          | SMA-Female         | N-Female           |
| Material       | ABS                | ABS                | ABS                | High Strength Plate     | ABS                | PVC (White)         | PVC (White)        | ABS                |
| Beam Width     | Hor 60°<br>Ver 60° | Hor 60°<br>Ver 60° | Hor 70°<br>Ver 70° | Working Field<br>0.1A/m | Hor 45°<br>Ver 45° | Hor 30°<br>Ver 120° | Hor 75°<br>Ver 45° | Hor 39°<br>Ver 39° |
| Operating Temp | -30°C~ 65°C        | -30°C~ 65°C        | -30°C~ 65°C        | -20°C~ 60°C             | -30°C~ 65°C        | -40°C~ 70°C         | -40°C~ 70°C        | -20°C~ 60°C        |



## RFID HANDHELD READER

RFID Handheld Reader is suitable for carrying to read RFID Tag at various points. Smart Identify, we provide both RFID bluetooth handheld and portable PC Handheld. Some of model can add optional function such as QR Code reader, sim card built-in or etc.,



| Model                     | Dimension                           | Weight       | Operating System                         | Processor                 | Memory                  |
|---------------------------|-------------------------------------|--------------|--|---------------------------|-------------------------|
| iData 50P UHF             | 150x73.5x16 mm.<br>Display 4.7 inch | 230 g.       | Android 9.0                              | CPU Octa-core<br>2.0 GHz. | 16 GB ROM +<br>2 GB RAM |
| Scan Engine               | Frequency                           | Output Power | Protocol                                 | Interface Port            | Sealing                 |
| 1D/2D Barcode<br>RFID Tag | 902~928 MHz.                        | 5~30 dbm     | ISO18000-6B<br>ISO18000-6C<br>(EPC C1G2) | USB Type-C                | IP67                    |



| Model                     | Dimension                           | Weight       | Operating System                 | Processor                | Memory                  |
|---------------------------|-------------------------------------|--------------|----------------------------------|--------------------------|-------------------------|
| iData T2 UHF              | 168x97x145 mm.<br>Display 6.21 inch | 680 g.       | Android 11.0                     | CPU Octa-core<br>2.0 GHz | 64 GB ROM +<br>4 GB RAM |
| Scan Engine               | Frequency                           | Output Power | Protocol                         | Interface Port           | Sealing                 |
| 1D/2D Barcode<br>RFID Tag | 902~928 MHz.                        | 8~33 dbm     | ISO18000-6C /<br>EPC Class1 Gen2 | USB Type-C               | IP67                    |



| Model                     | Dimension                           | Weight       | Operating System                 | Processor                | Memory                  |
|---------------------------|-------------------------------------|--------------|----------------------------------|--------------------------|-------------------------|
| iData T2X UHF             | 168x97x145 mm.<br>Display 6.21 inch | 315 g.       | Android 11.0                     | CPU Octa-core<br>2.0 GHz | 64 GB ROM +<br>4 GB RAM |
| Scan Engine               | Frequency                           | Output Power | Protocol                         | Interface Port           | Sealing                 |
| 1D/2D Barcode<br>RFID Tag | 902~928 MHz.                        | 0~25 dbm     | ISO18000-6C /<br>EPC Class1 Gen2 | USB Type-C               | IP67                    |



| Model                    | Dimension                             | Weight       | Operating System              | Processor                | Memory                  |
|--------------------------|---------------------------------------|--------------|-------------------------------|--------------------------|-------------------------|
| iData T3 Pro             | 162.2x78.5x15 mm.<br>Display 5.5 inch | 258 g.       | Android 13.0 GMS              | CPU Octa-core<br>2.0 GHz | 64 GB ROM +<br>4 GB RAM |
| Scan Engine              | Frequency                             | Distance     | Protocol                      | Interface Port           | Sealing                 |
| 1D/2D Barcode<br>NFC Tag | 13.56 MHz                             | Within 35 mm | ISO14443A /<br>14443B / 15693 | USB Type-C               | IP67                    |

## PDA SCANNER



| Model                    | Dimension                       | Weight       | Operating System              | Processor                | Memory                  |
|--------------------------|---------------------------------|--------------|-------------------------------|--------------------------|-------------------------|
| iData K3S                | 162x68x19 mm.<br>Display 4 inch | 278 g.       | Android 12.0 GMS              | CPU Octa-core<br>2.0 GHz | 64 GB ROM +<br>4 GB RAM |
| Scan Engine              | Frequency                       | Distance     | Protocol                      | Interface Port           | Sealing                 |
| 1D/2D Barcode<br>NFC Tag | 13.56 MHz                       | Within 60 mm | ISO14443A /<br>14443B / 15693 | USB Type-C               | IP65                    |



| Model                    | Dimension                       | Weight       | Operating System              | Processor                | Memory                  |
|--------------------------|---------------------------------|--------------|-------------------------------|--------------------------|-------------------------|
| iData K8                 | 205x76x31 mm.<br>Display 4 inch | 440 g.       | Android 12.0 GMS              | CPU Octa-core<br>2.0 GHz | 64 GB ROM +<br>4 GB RAM |
| Scan Engine              | Frequency                       | Distance     | Protocol                      | Interface Port           | Sealing                 |
| 1D/2D Barcode<br>NFC Tag | 13.56 MHz                       | Within 60 mm | ISO14443A /<br>14443B / 15693 | USB Type-C               | IP68                    |



| Model                    | Dimension                           | Weight      | Operating System              | Processor                | Memory                  |
|--------------------------|-------------------------------------|-------------|-------------------------------|--------------------------|-------------------------|
| iData T1                 | 157x74x13.6 mm.<br>Display 5.5 inch | 230 g.      | Android 10.0                  | CPU Octa-core<br>2.0 GHz | 16 GB ROM +<br>2 GB RAM |
| Scan Engine              | Frequency                           | Distance    | Protocol                      | Interface Port           | Sealing                 |
| 1D/2D Barcode<br>NFC Tag | 13.56 MHz                           | Within 6 mm | ISO14443A /<br>14443B / 15693 | USB Type-C               | IP68                    |



| Model         | Dimension  | Weight            | Shell material             | Image Sensor   | Light source        |
|---------------|--|-------------------|----------------------------|----------------|---------------------|
| iData J16     | 174.82x85.3x<br>64.48 mm.  | 153 g.            | PC+ABS                     | 1280x800 pixel | White, Red,<br>Blue |
| Scan Engine   | Scanning angle   | Scanning accuracy | Interface Port             | Sealing        |                     |
| 1D/2D Barcode | Pitch : $\pm 60^\circ$ ; Skew : $\pm 45^\circ$ ;<br>Tilt : $360^\circ$ | $\geq 3.33$ mil   | USB-HID,<br>USB-CDC, RS232 | IP52           |                     |



| Model                    | Dimension                                 | Weight       | Operating System                 | Processor                | Memory                  |
|--------------------------|---|--------------|----------------------------------|--------------------------|-------------------------|
| iData P1                 | 244.8x163.6x14.9 mm.<br>Display 10.1 inch | 879 g.       | Android 11.0<br>Android 13.0 GMS | CPU Octa-core<br>2.0 GHz | 64 GB ROM +<br>4 GB RAM |
| Scan Engine              | Frequency                                 | Distance     | Protocol                         | Interface Port           | Sealing                 |
| 1D/2D Barcode<br>NFC Tag | 13.56 MHz                                 | Within 60 mm | ISO14443A /<br>14443B / 15693    | USB Type-C 3.0           | IP65                    |

## RFID BARCODE PRINTER

RFID barcode printers are the same type of printers as barcode printers. Just add a special device, namely an RFID signal writer into the device. There is a restriction on the signal wave being within the range of the UHF signal only.



|                  |  |
|------------------|--|
| Model            | ZD621R                                     |
| Dimension        | 202(W) x 192(H) x 267(L) mm.               |
| Weight           | 2.5 kg.                                    |
| Max. Print Width | 4.09 in. for 203 dpi, 4.16 in. for 300 dpi |
| Interface        | Ethernet, USB 2.0, USB Host                |

Supports tags compatible with : UHF EPC Gen 2 V2, ISO/IEC 18000-63 and RAIN RFID Protocols



|                  |   |
|------------------|---|
| Model            | ZD610R  |
| Dimension        | 268.2(W) x 395.68(H) x 505(L) mm.                       |
| Weight           | 22.7 kg.  |
| Max. Print Width | 4.09 in.  |
| Interface        | USB 2.0, RS-232 Serial, Ethernet, Gigabit Bluetooth 4.0 |

Supports tags compatible with : UHF EPC Gen 2 V2, ISO/IEC 18000-63 and RAIN RFID Protocols



|                  |  |
|------------------|--|
| Model            | ZD411R   |
| Dimension        | 269(W) x 324(H) x 495(L) mm.                           |
| Weight           | 16.33 kg.  |
| Max. Print Width | 4.09 in.   |
| Interface        | USB 2.0, RS-232 Serial, 10/100 Ethernet, Bluetooth 4.1 |

Supports tags compatible with : RFID On-Metal Tag

## RFID RF CABLE

RF cable is a connect cable for connecting the RFID Reader to the Antenna. RF cable is the basic cable used for transmitting video and audio mainly. Because the port of the RFID Reader has a different port, we have an RF cable that They come in different lengths and different types of connectors such as FMA male, TNC male, N male, etc.



RF CABLE TYPE 1 : LMR400 CABLE

| Cable length | Fixed connector | Antenna connector |
|--------------|-----------------|-------------------|
| 5 M          | TNC male        | N male            |
| 10 M         |                 |                   |
| 15 M         |                 |                   |



RF CABLE TYPE 2 : 5D-FB CABLE

| Cable length | Fixed connector | Antenna connector |
|--------------|-----------------|-------------------|
| 5 M          | TNC male        | SMA male          |
| 10 M         |                 |                   |



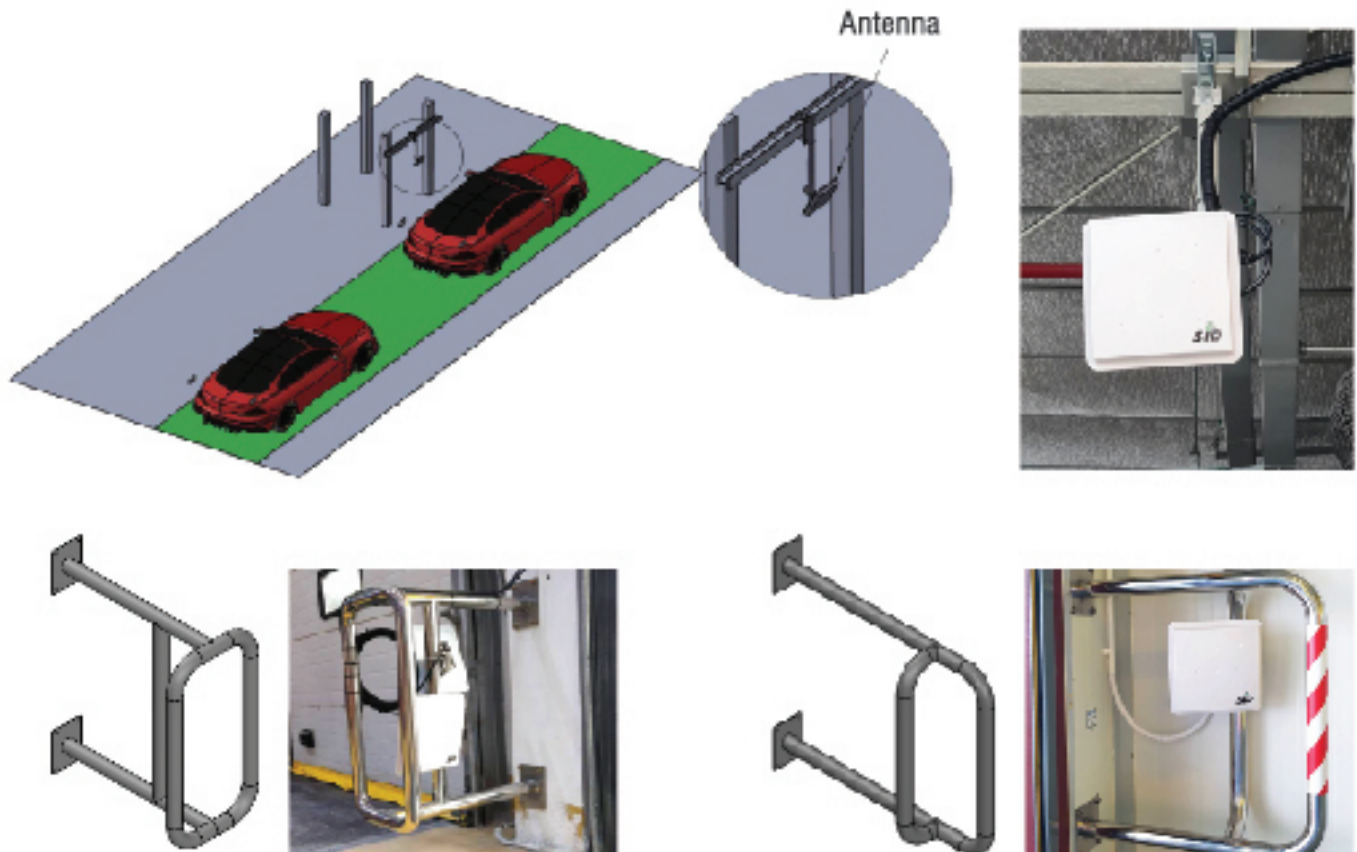
RF CABLE TYPE 3 : 5D-FB CABLE

| Cable length | Fixed connector | Antenna connector |
|--------------|-----------------|-------------------|
| 5 M          | SMA male        | N male            |
| 10 M         |                 |                   |



## RFID BRACKET & INSTALLATION DESIGN SERVICE

The bracket mounting, the visual design how installation look like and the proper point of installation for the RFID reader device these are necessary and should not be overlooked. Smart Identify Ltd., here, we support and consultant customer for these works and provide service for our customers to make sure that they will get the best result for RFID project.



## NBTC DOCUMENT SUBMISSION SERVICE

To complete with the regulation of The National Telecommunication Commission (NBTC) of Ultra High Frequency (UHF) RFID, Smart Identify Ltd., have care service for the document submission process such as Commercial License, Installation RFID device License and Using RFID device License to convenient with customers when they complete their RFID project. For more detail, you can visit our website: [solution & support > NBTC service](#)



Frequency : 920-925 MHz





## CUSTOMIZED RFID READER

With more than 10 years of experience in the field of RFID devices we are experts in the design and installation of various types of RFID readers. to be applied within government agency, retail stores or industrial warehouses.

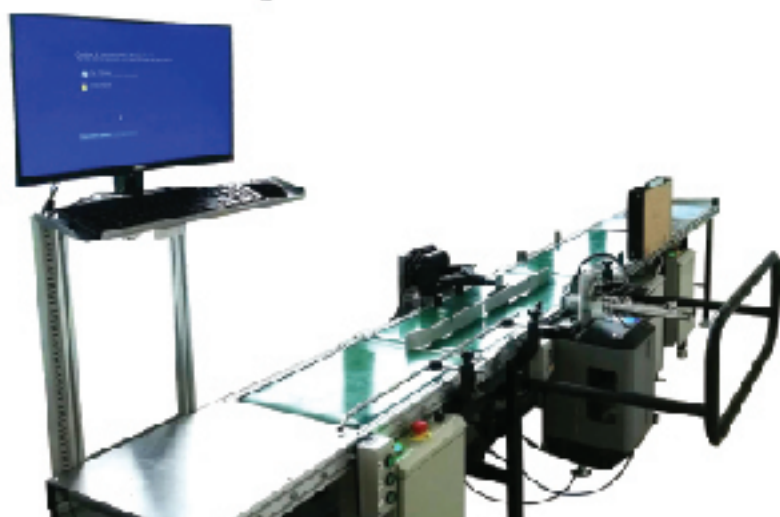


### RFID TUNNEL READER

Reader for reading multiple RFID Tag data at once

- Size 160(L) x 130(H) x 69(W) cm.
- Size Tunnel 65(L) x 70(H) x 69(W) cm.
- Conveyor 160(L) x 42(W) cm.
- Fixed UF2861
- Antenna Circular 4 dbi

The RFID Tunnel is designed to allow simultaneous reading of RFID tags attached to goods or packages on conveyor belts.



### PRINT & APPLICATOR RFID PRINTER AND RFID READER SET WITH CONVEYOR

- RFID Printer with Apply Label unit
- Fixed UF2861-POE
- Antenna Circular 4 dbi
- Conveyor

A printer that can print labels and write data to RFID labels at the same time.



## CUSTOMIZED RFID STATION

Reader for reading multiple devices simultaneously, has a frequency of 920~925 MHz and supports ISO 18000-6C (EPC C1G2), ISO 18000-6B protocol tags.

### RFID GATE STATION

Size : 1,050(W) x 400(L) x 2,300(H) mm.



- Fix Reader with 4 Antennas
- Base on imping R2000 Design
- Build in Panel PC with touch Screen 15.6"
- Support windows 10

### RFID TUNNEL STATION

Size : 1,500(W) x 800(L) x 2,155(H) mm.



- Fix Reader with 4 Antennas
- Base on imping R2000 Design
- Build in Panel PC with touch Screen 15.6"
- Support windows 10

### RFID MOBILE CHAMBER STATION

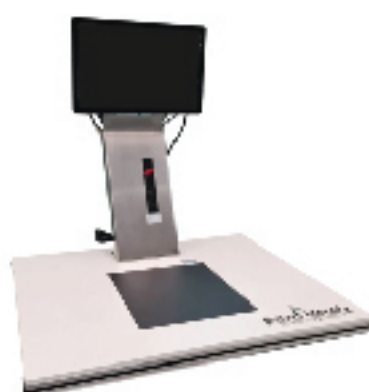
Size : 700(W) x 600(L) x 1,250(H) mm.



- Fix Reader with 2 Antennas
- Base on imping R2000 Design
- Build in Panel PC with touch Screen 15.6"
- Support windows 10
- Can movable

### RFID TABLE STATION

Size : 800(W) x 600(L) x 750(H) mm.



- Fix Reader with 1 Near field Antennas
- Base on imping R2000 Design
- Build in Panel PC with touch Screen 15.6"
- Support windows 10

### RFID TROLLEY CART

Size : 450(W) x 550(L) x 1350(H) mm.



- Integrate Reader 8 dbi
- Build in Panel PC with touch Screen 15.6"
- Support windows 10
- Can movable



# POC SERVICE

## BE CONFIDENT BEFORE KICKOFF YOUR RFID PROJECT

Proof of concept (POC) is the process for testing RFID hardware both tag & reader to see the result and make customer to confident before kickoff RFID project. Smart Identify Ltd., We have POC service at your site with controlled and managed by the team of engineers and technicians with direct experience that well training to assess and analyze working process of RFID hardware in projects. We consider the actual functionality of hardware in solution concept.



### POC SERVICE TO TRACKING PALLETS

For customers who want to apply the RFID system to tracking or count the number of pallets used in the warehouse. We provide a POC service to test the functionality of the RFID device in a real-world environment at the customer's site.

### POC SERVICE TO TRACKING ASSETS

At present the company have begun use RFID systems for more applications asset tracking within the company. We have a complete set of RFID hardware to test the work for customers to see the real working of our RFID hardware. To be an option before the customer decides to use the RFID system for asset tracking.



### POC SERVICE CONTROL ACCESS CAR

We provide POC services for access control systems of the car within the area of your company or factory so that customers can see the actual working of our RFID hardware, which will allow customers to decide on the right RFID device for your work area.

### POC SERVICE TO TRACKING GOLD

Gold jewelry is a high-value item that requires regular counting. A make POC service to tracking gold is to assure customers that our RFID devices can actually work locally the job site and meet the needs of customers or not.





# RFID INSTALLATION TEAMS

## ONE STOP SERVICE FOR NETWORK & RFID INSTALLATION

Smart identify, our installation team control and manage by our engineers and technicians who experts in various fields with specific expertise and well training for the correctness of RFID & infrastructure installation process with quality work and we also take into account the safety of users as important

PALLET TRACKING SYSTEM FACTORY 1



- RFID Hardware Supply
- Installation Hardware
- Create Middle Software to Integrate Customer's Software



PALLET TRACKING SYSTEM FACTORY 2



- RFID Hardware Supply
- Installation Hardware
- Create Middle Software to Integrate Customer's Software



PROCESS TRACKING SOLUTION



- RFID Hardware Supply
- Installation Hardware
- Software Develop Consulting



PROCESS TRACKING SOLUTION



- RFID Hardware Supply
- Installation Hardware
- Software Develop Consulting



# LOOK UP TO THE FUTURE



Line@



Website



**SMART IDENTIFY LTD.**

Office | Factory

38 Soi Samwa 31, Bangchan, Klong Samwa, Bangkok 10510

Tel. +66(0)2-136-9171-4 | Line : @Smartidentify



[www.smartiden.com](http://www.smartiden.com)



[@Smartidentify](https://line.me/tv/@Smartidentify)



[info@smartiden.com](mailto:info@smartiden.com)