

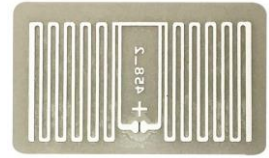
Bling Wet Inlay Impinj Monza R6-P

Ideal for Small Item-Level Tagging

RFID-ILW-UHF-STC01 BLING inlays and tags are specially designed for jewelry and cosmetics applications, and offer excellent performance and superior closecoupling features.

BLING inlays and tags have a tiny (22 mm/0.9 inch) form factor, allowing them to be easily converted into small-sized hang-tags for jewelry labels, or attached to small cosmetic items. They are equipped with the Impinj Monza R6 chip that comes with an Autotune feature, which helps the BLING product to work at peak efficiency, even in rapidly changing environments. BLING products are available with the Impinj Monza R6 and R6-P chips. Inlays with Monza R6 chips offer unique TID, enable pre-serialized EPC and are 100% performance tested. Inlays with Monza R6-P offer additional features such as add-on user memory and on-demand memory configuration as well as a kill function and easy access control to change tag information for store data, if required. The inlays and tags are available in dry, wet and paper tag delivery formats, and are suitable for full integration into the SMART COSMOS Cloud Services platform.

RFID-ILW-UHF-STC01 inlays and tags are compliant with ISO 9001:2015 Quality Management and ISO 14001:2015 Environmental Management, which ensure a reliable and state-of-the-art product that meets a variety of application needs, especially in the retail environment.



Overview

Operating Frequency

860 - 960 MHz

Integrated Circuit (IC)

Impinj Monza R6 & R6-P

Antenna Size

22 x 12 mm (0.9 x 0.5 in)

Die-cut Size

25 x 15 mm (1.0 x 0.6 in)

International Standards

- ▶ EPC Class 1 Gen 2
ISO 18000-6C

Application Areas

- ▶ Brand protection
- ▶ Retail for jewelry and cosmetics



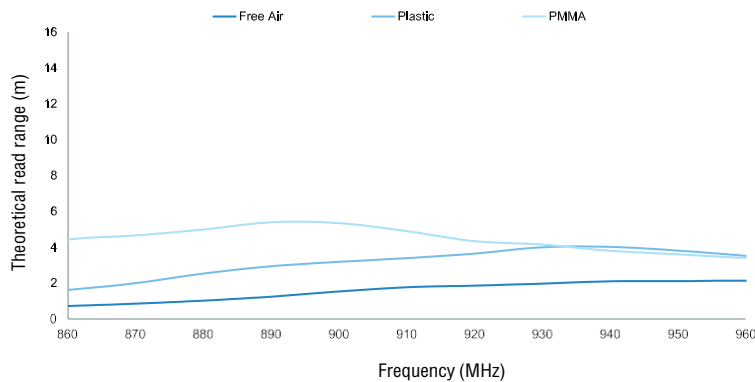
Bling Wet Inlay Impinj Monza R6-P

Ideal for Small Item-Level Tagging

Technical Features

IC + Memory	Size	Format	Sales Code
Impinj Monza R6	22 x 12 mm / 0.9 x 0.5 in	Inlay	3005454
96 bit	25 x 15 mm / 1.0 x 0.6 in	Wet	3005455
	25 x 15 mm / 1.0 x 0.6 in	Paper Tag	3005456
Impinj Monza R6-P	22 x 12 mm / 0.9 x 0.5 in	Inlay	3006270
128 bit EPC + 32 bit user	25 x 15 mm / 1.0 x 0.6 in	Wet	3006271
96 bit EPC + 64 bit user	25 x 15 mm / 1.0 x 0.6 in	Paper tag	3006272
Web Width	28 mm / 1.1 in		
Operating Temperature	-40 °C to +85 °C / -40 °F to +185 °F		
Adhesive	Acrylic, water borne adhesive		
Qty/Reel	5,000 pcs		
Core Size	76 mm / 3 in		
Shelf Life	+20 °C, 50 % RH / 68 °F, 50 % RH - minimum 2 years from the date of manufacturing		

Read Range (m)



Orientation Sensitivity

